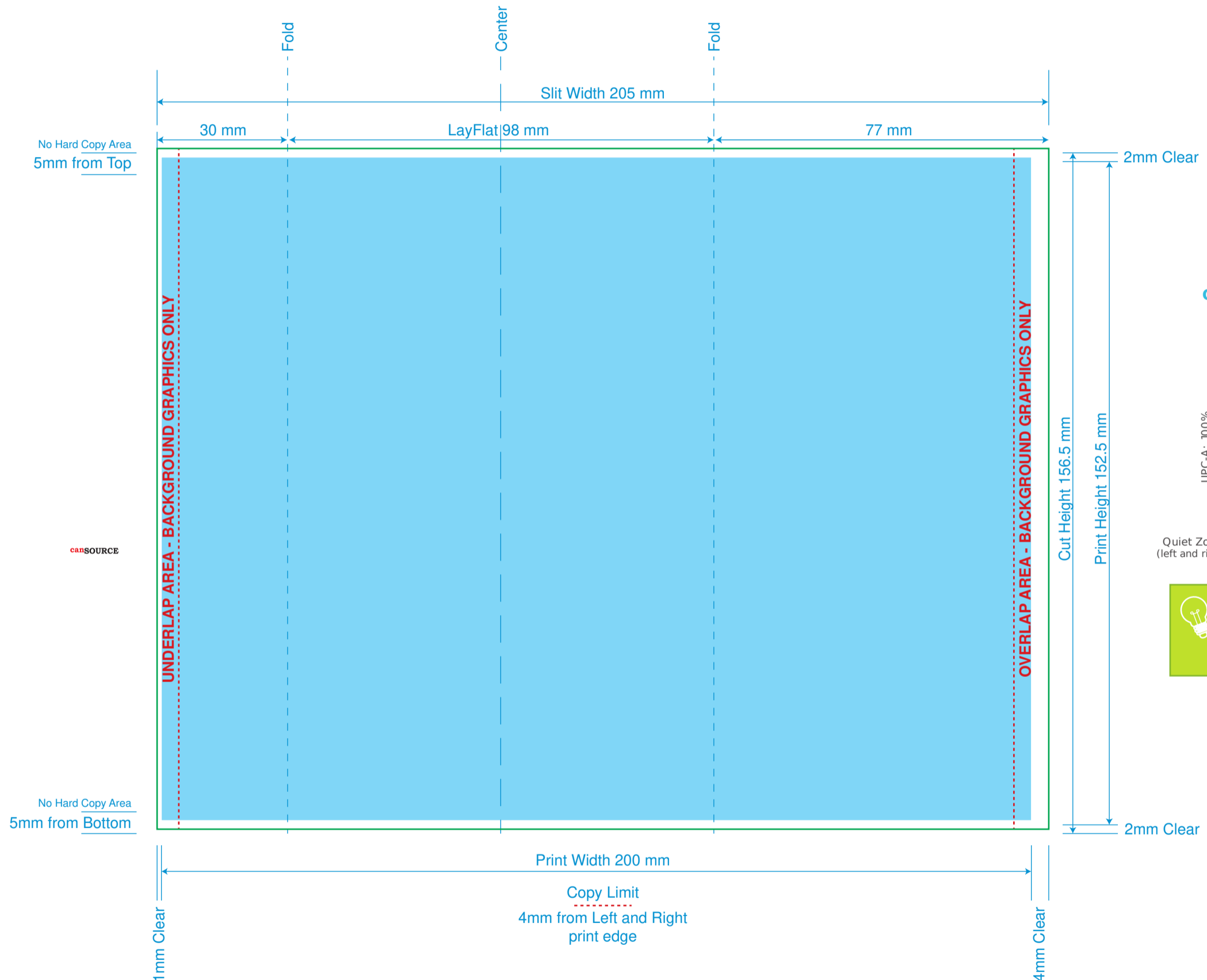
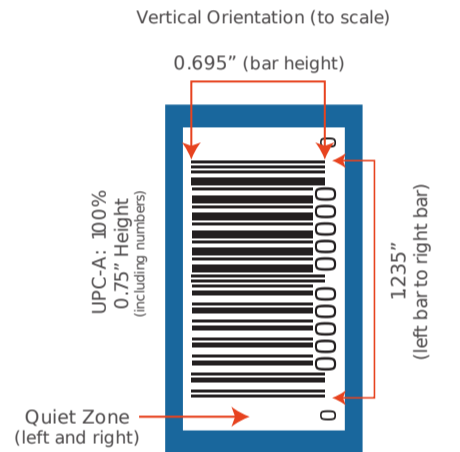


12oz SLEEK Can Template Gloss Varnish



SUGGESTED BARCODE ORIENTATION AND SIZE:



- TIPS:**
- Avoid creating barcodes using red, light pink, orange, light brown, yellow, white, and metallic colors.
 - Back all barcodes in white ink
 - Must have contrast in color between UPC and background

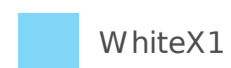
TECHNICAL SWATCHES

These swatches are used to show size, folds, and copy limit ONLY. **DO NOT** manipulate or use them in the design of your artwork.



WHITE INK SWATCH

This swatch should be used on the "White Layer" **ONLY** to indicate where white ink needs to print.



ART NOTES

- Outline all fonts and embed all images
- Downscale images to 300-450 dpi
- Rasterize complex vector
- File should be no larger than 50MB
- No critical copy should be placed outside of copy limit lines